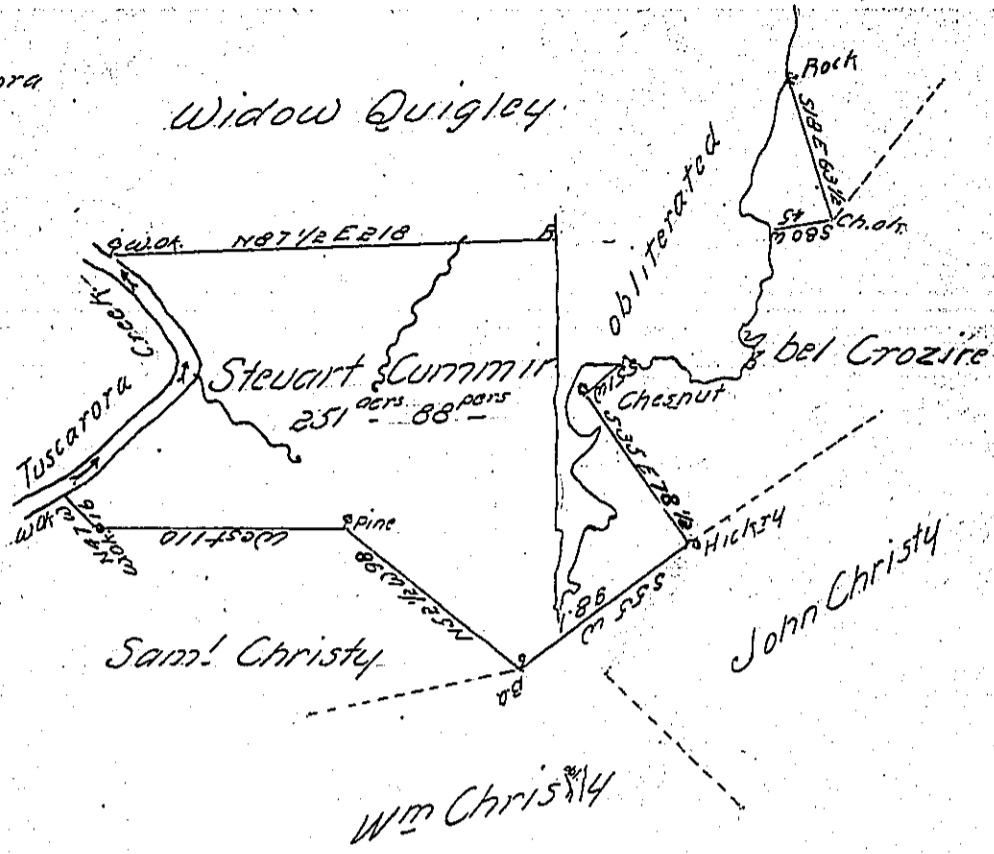


Courses	Distances
N 52 1/2 W	98
West	110
N 47 W	16
N 47 E	82
N 32 W	40
N 57 W	25
N 87 1/2 E	218
N 17 E	33
N 70 1/2 E	47
N 51 E	40
S 18 E	63 1/2
S 80 W	45
S 40 W	71
S 51 W	20
S 35 E	78 1/2
S 55 W	98 1/2



Draft of a tract (obliterated) Millford obli vrs hip Mifflin County contain-  
 ing two hundred fifty one acres eighty eight perches & the allowance  
 of six P Cent for roads &c<sup>a</sup> surveyed for Stewart Cummins July 14<sup>th</sup>  
 1794 in pursuance of a Warrant dated April 29<sup>th</sup> 1793

To Daniel Brodhead Esq<sup>r</sup>  
 Surv<sup>r</sup> Gen<sup>l</sup> of Pennsylvania

James Harris D.S

IN TESTIMONY that the above is a copy of the original remaining on file in  
 the Department of Internal Affairs of Pennsylvania, made  
 conformably to an Act of Assembly approved the 16th day of  
 February, 1833, I have hereunto set my Hand and caused  
 the Seal of said Department to be affixed at Harrisburg,  
 this first day of March 1904

*James P. Brown*  
 Secretary of Internal Affairs.